

CHECK VALVE - CLAPET

VALVOLA MULTIFUNZIONE:
CONTROLLO; NON RITORNO; ANTI ODORE;
POSABILE IN QUALSIASI ANGOLATURA;
DISPONIBILE IN MOLTI DIAMETRI

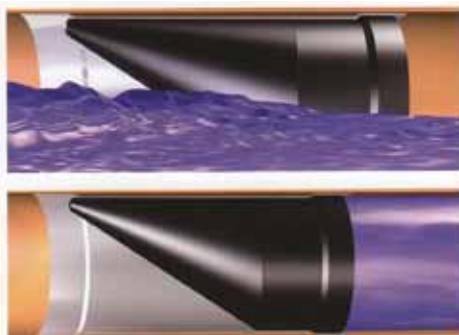
CE APPROVED

LA VALVOLA ENTRA IN FUNZIONE CON UN ABACO DEL 50%
PUO' ESSERE APPLICATA PER ACQUE NERE, GRIGIE E BIANCHE

Comment ça marche ?

Lorsque le fluide circule dans le sens d'écoulement normal, la pression sur la membrane crée une ouverture dans la partie inférieure suffisamment grande pour laisser passer le fluide dans le bon sens.

Si, au contraire, l'écoulement se produit dans l'autre sens, la membrane se remplit de liquide ou de gaz et agit comme un bouchon empêchant tout reflux dans le conduit.



WaStop s'installe en quelques minutes dans un conduit ou un puits. Il peut s'installer en position horizontale ou verticale, soit en entrée ou en sortie. Le matériel nécessaire pour l'étanchéité et la fixation à l'intérieur du conduit est fourni. Les raccords sont disponibles à la vente sur demande (voir exemple).



How it works

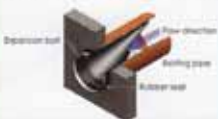
The revolutionary patented and certified Wastop® inline check valve can be installed in minutes in a pipeline or chamber. It can be installed either horizontally or vertically and either at an inlet or outlet. WaStop® can be installed to prevent backflow in all cases.

Flow in the normal direction causes a slight pressure build-up against the membrane which in turn causes the membrane to open just enough to allow the flow to pass unhindered. When backflow occurs the membrane fills with water or gas and acts as a stopper blocking all back flow in the pipe or drain. WaStop® check valve can be designed to withstand up to 8 meters back pressure.

Inline installation



Chamber installation



Outlet installation



Flange installation



Advantages of WaStop®

- Installed for over 10 years worldwide with 100% satisfaction
- Superior construction materials
- Extremely low head loss
- Low life cycle cost and easy installation
- No moving parts - virtually maintenance-free
- Many dimensions 40 - 1500 mm std & non-standard pipes
- Stops liquids, gases, odours, insects and small animals
- Many installation options - vertical to horizontal
- The ORIGINAL inline check valve - leading development

CHECK VALVE - CLAPET

Standard WaStop® check valves are manufactured using stainless steel EN1.4301/AISI 304 or PVC.

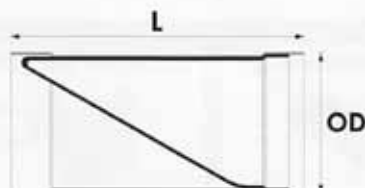
WaStop® stainless steel EN1.4301/AISI 304

Art. no.	DN	OD	L	Fit in existing pipe (min-max)
ws97-55-304	100	97	220	98-101
ws101-55-304	110	101	220	102-105
ws118-55-304	125	118	250	119-121
ws146-55-304	150	146	300	147-150
ws183-55-304	200	183	400	185-193
ws193-55-304	200	193	410	195-203
ws215-55-304	225	215	450	217-225
ws230-55-304	250	230	480	232-240
ws240-55-304	250	240	520	242-250
ws290-55-304	300	290	600	292-300
ws340-55-304	350	340	700	342-354
ws390-55-304	400	390	750	392-404
ws440-55-304	450	440	900	442-454
ws490-65-304	500	490	900	492-504
ws590-65-304	600	590	1200	592-604
ws690-65-304	700	690	1300	692-708
ws790-65-304	800	790	1500	792-808
ws885-65-304	900	885	1700	887-913
ws985-65-304	1000	985	1800	992-1013
ws1185-75-304	1200	1185	2250	1187-1213
ws1385-75-304	1400	1385	2600	1387 - 1415
ws1485-75-304	1500	1485	2800	1487 - 1515

WaStop® PVC

Art. no.	DN	OD	L
ws75pvc-45	75	75	125
ws110pvc-55	110	110	210
ws125pvc-55	125	125	240
ws160pvc-55	160	160	300
ws200pvc-55	200	200	400

Other dimensions can be manufactured on request, with or without flange. Contact WaStop International AB for technical drawings.



Special versions of WaStop® can be ordered, according to your requirements.

Pipe: EN1.4301/AISI 304 as standard, extra charge if EN1.4404/AISI 316 is required.

Back pressure: up to 8m

PREVENTIVI A RICHIESTA



Applications for WaStop®

Basement flooding

Installing a WaStop® inline check valve in the buildings' drainage system or in a basement can protect the property from flooding. Installation costs and time invested can be kept to a minimum by installing a WaStop® in an existing drainage system.

Odour control

The discharge of odours or aggressive gases from sewage systems can be a major problem in some areas. Discharge can be stopped, or directed to a less sensitive area by installing a WaStop®.

Waste water, surface water and tidal areas

WaStop® protects wastewater and stormwater pipe systems from high water levels in rivers, lakes and tidal areas. By installing WaStop® insects and small animals are also stopped from entering storm and waste water systems.

Emergency overflow

Flooding may occur between waste and stormwater drains caused by water forcing its way back into the drainage system. To prevent this a WaStop® can be installed in the emergency overflow.

Wetlands

Prevent salt water or other unwanted water from forcing back through an outlet leading to flooding of wetlands or other flood sensitive farmland.